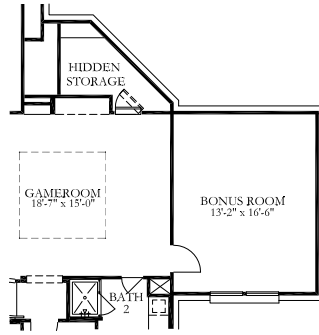
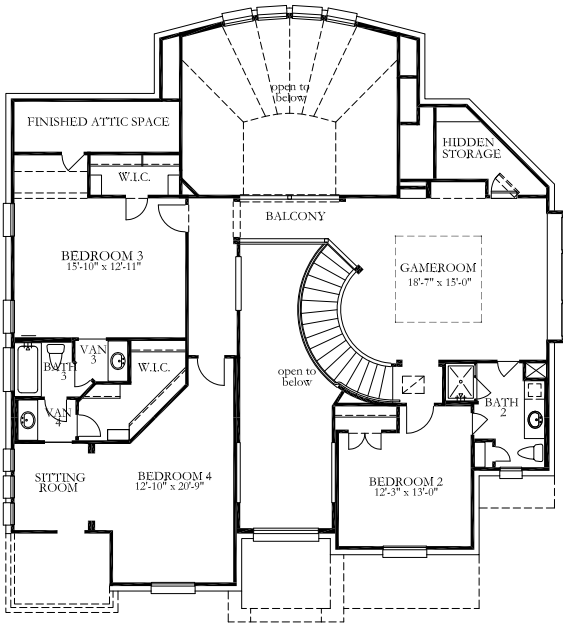
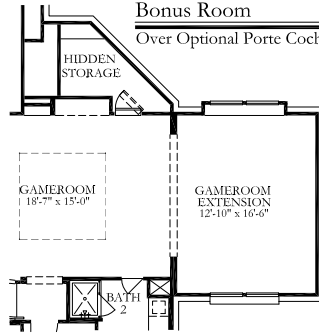


**PLAN D351 - 3907 sq.ft.**

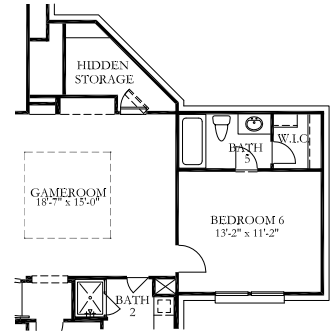


**Option #0188  
Bonus Room**  
Over Optional Porte Cochere +244 sq ft

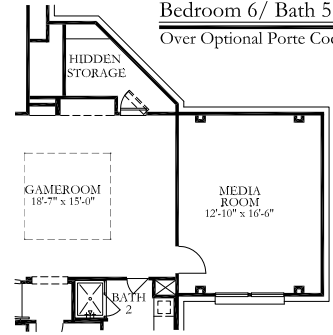


**Option #0189  
Gameroom Extension**  
Over Optional Porte Cochere +248 sq ft

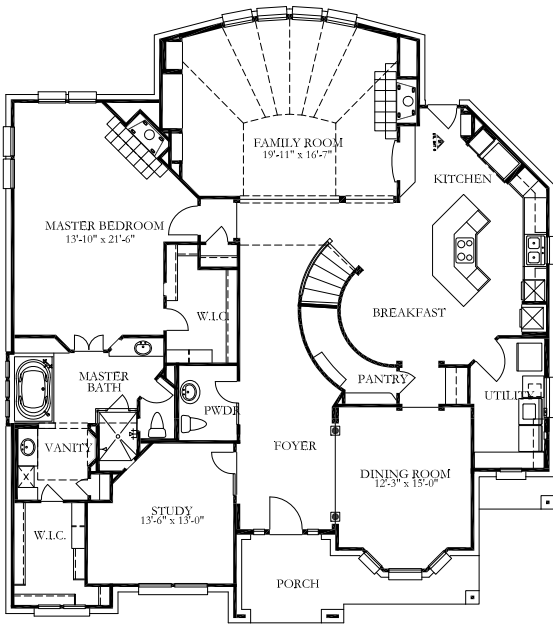
**Options**



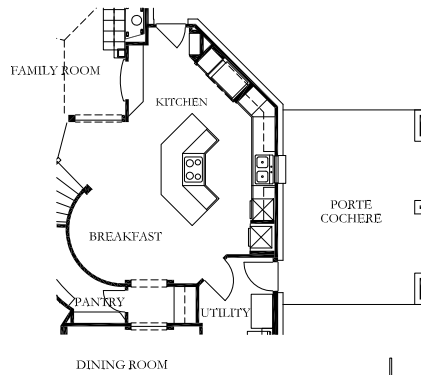
**Option #0208  
Bedroom 6 / Bath 5**  
Over Optional Porte Cochere +244 sq ft



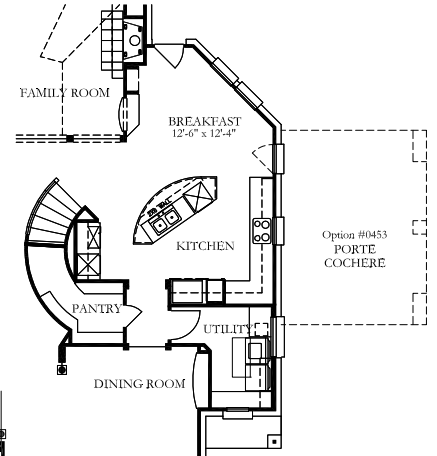
**Option #0350  
Media Room**  
Over Optional Porte Cochere +244 sq ft



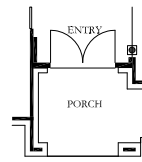
**FIRST FLOOR**



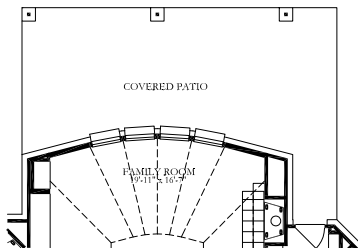
**Option #0189/0208/0188/0350  
Porte Cochere W/ Room Above**



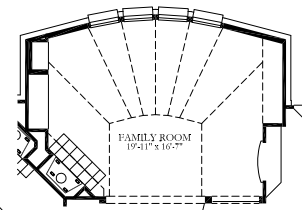
**Option #0398  
ALTERNATE KITCHEN**



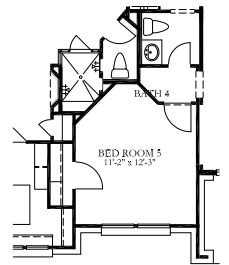
**Option #0105  
Double Front Door**



**Option #0105  
Covered Patio**



**Option #0272  
Fireplace @ Family Room**



**Option #0190  
BED ROOM 5 w/ BATH 4  
FROM STUDY & POWDER**

In an effort to constantly improve our plans, homes started in the future and some recently started homes under construction may have substantial differences from existing Trendmaker homes, including models, that may already be built in communities. Square footage is approximate and may vary per elevation.